



Ground Improvement and Specialty Piling Contractors

Project Summary

G3 Terminal
Vancouver, BC

The Premier Design-Build Geotechnical Contractor™

Cement Deep Soil Mixing (CDSM)



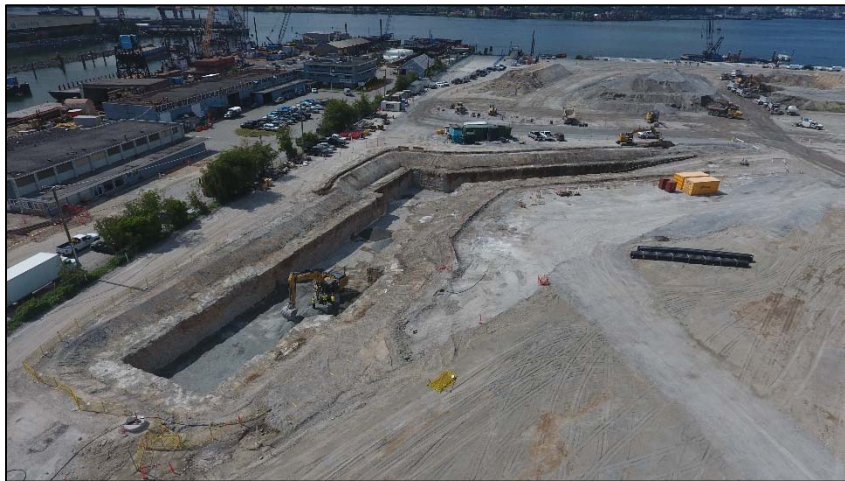
CDSM Batch Plant



CDSM Production



CDSM Finished Product



Completed CDSM "Bathtub" Configuration

Project Description:

Excavation support and water control, for grain terminal rail receiving pit. AGI designed and installed CDSM cut-off walls along the perimeter of the receiving pit combined with a bottom seal treatment to provide a "bathtub" like configuration. This allowed for sufficient temporary support during the construction of the permanent structure.

Application:

- ❖ CDSM shoring wall for excavation support
- ❖ Water permeation control

Geotechnical Conditions:

- ❖ Organic deposits
- ❖ Compact sand and gravel
- ❖ Prevalent obstructions

Design-Build Contractor:

AGI Foundation Contractors ULC, Canadian subsidiary of Advanced Geosolutions Inc (AGI)

Owner: Bunge North America

General Contractor:

Kiewit Corporation

Geotechnical Engineer:

Thurber Engineering Ltd.