



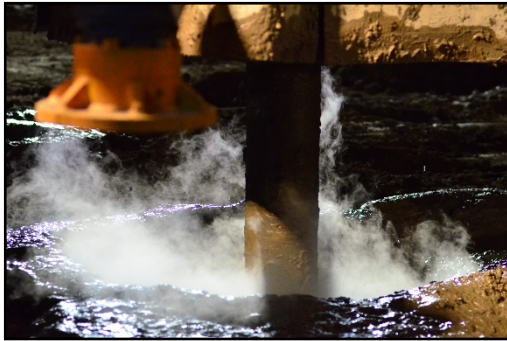
Ground Improvement and Specialty Piling Contractors

Project Summary

Project Piper
Troutdale, Oregon

The Premier Design-Build Geotechnical Contractor™

Deep Soil Mixing | Load Transfer Platform



Project Description:

Tilt-up construction of an 855K sq-ft warehouse. AGI designed a solution consisting of over 4,400 Deep Soil Mixing columns up to 70 feet deep with a 3-foot-thick load transfer platform to support the floor slab. AGI-Fudo, JV constructed the columns in 4 months working double shifts with 4 drill rigs and 3 batch plants.

Application:

- ❖ Provide improved bearing capacity
- ❖ Uniform slab support with increased modulus of subgrade reaction
- ❖ Mitigate liquefaction settlement
- ❖ Limit static settlement

Geotechnical Conditions:

- ❖ Artificial fill and organics
- ❖ Soft silts and clays to 30'
- ❖ Loose, liquefiable sands to 60'

Design-Build Contractor:

Advanced Geosolutions Inc (AGI)
[AGI-Fudo, JV]

Developer (Tenant):

Trammell Crow Company (Amazon.com Inc)

General Contractor:

Sierra Construction Company, Inc.

Geotechnical Engineer:

GeoDesign, Inc.