



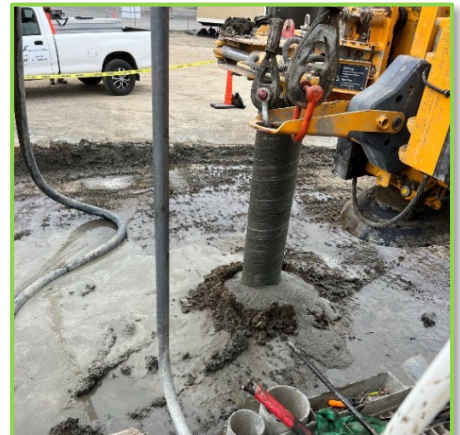
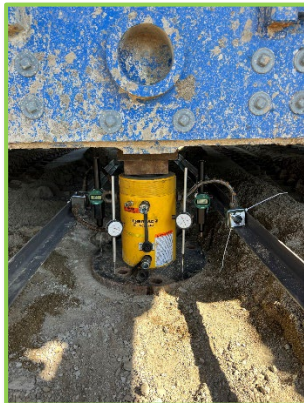
Ground Improvement and Specialty Piling Contractors

Project Summary

Campus Building, Union Sanitary District Alvarado WWTP
Union City, California

The Premier Design-Build Geotechnical Contractor™

Design-Build, Displacement Grouted Column (DGC)



Project Description

Advanced Geosolutions Inc. (AGI) constructed Displacement Grouted Columns (DGC) to improve the ground conditions at the new Campus Building at the Union Sanitary District Alvarado Wastewater Treatment Plant located in Union City, California.

The DGCs were installed to provide support to the foundation loads and limit the total static settlement to approximately 1 inch or less.

AGI conducted three compressive load tests in general accordance with ASTM D1143 on representative DGC elements to verify the design loads. The tests were successful, and AGI was able to complete the project ahead of schedule to the satisfaction of all the project's stakeholders.

Geotechnical Conditions

- ❖ Soft, compressible, fine-grained soil

Application

- ❖ Limit the static settlement
- ❖ Improve bearing capacity

Design-Build Contractor:

Advanced Geosolutions Inc (AGI)

Owner:

Union Sanitary District

General Contractor:

Zovich Construction

Geotechnical Engineer:

Cal Engineering and Geology