



Ground Improvement and Specialty Piling Contractors

Project Summary

GBxMB Watsonville
Watsonville, CA

The Premier Design-Build Geotechnical Contractor™

Displacement Grouted Columns (DGC)



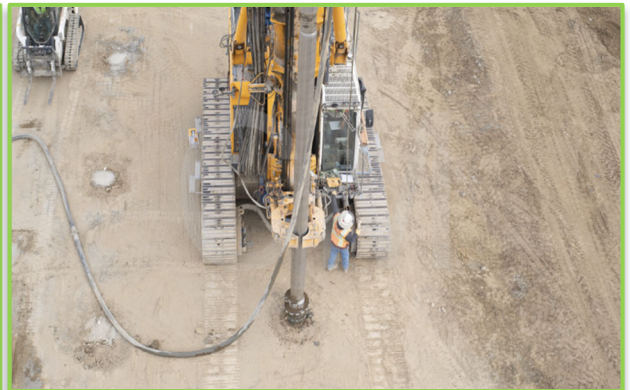
Field crew



Batch plant



Compressive load test



DGC column installation

Project Description:

AGI designed and constructed ground improvement work for a 150,000 SF beverage warehouse facility located in Watsonville, CA. DGC columns were installed to transfer building loads below the near surface soils which are not able to meet the desired bearing capacity for the proposed slab-on-grade and foundation loads. A total of 820 19" nominal diameter columns were installed with AGI's advanced BG33 drill rig which is equipped with an onboard data acquisition system that monitors depth, volume of product released and other relevant numerical data to ensure every column was installed to the project specifications. AGI performed 2 compressive load tests on production DGC's and results indicated performance within the allowable limit.

Geotechnical Conditions:

- ❖ Clay/silt

Application:

- ❖ Limit static settlement
- ❖ Improve bearing capacity

Design-Build Contractor:

Advanced Geosolutions Inc (AGI)

Owner:

Reyes Holdings, LLC

General Contractor:

Ryan Companies US, Inc.

Engineer:

Intertek PSI