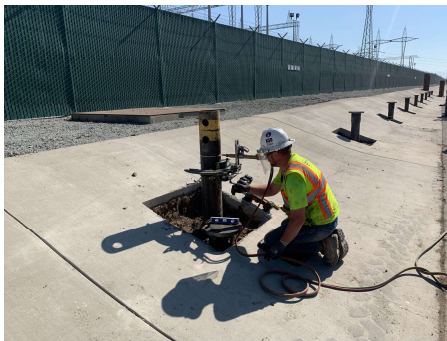


Project Summary

Moss Landing ML350 Battery Storage Moss Landing, California

The Premier Design-Build Geotechnical Contractor™

Helical Piles | Structural Foundations



Project Description:

AGI performed Specialty Piling work at the Moss Landing Power Plant ML350 Battery Storage project in Moss Landing, CA. The intent of the piling work is to provide structural foundations for the new battery storage facilities. 2,045 single-helix steel piles were installed; additionally, each pile was cut to design elevation and capped. The helical piles were used for faster, cleaner installations that can be loaded immediately to meet project milestones with simultaneous operations. AGI tracked the pile installations by recording depth, inclination, and torque at each location, which allowed the GC Burns & McDonnell to proceed with simultaneous operations without conflict to their schedule.

Geotechnical Conditions:

- ❖ Saturated Fat Clay
- ❖ Saturated Loose Sand

Application:

- ❖ Provide structural foundations to support new battery storage facilities.

Design-Build Contractor:

Advanced Geosolutions Inc (AGI)

Developer (Tenant):

Visra

General Contractor:

Burns & McDonnell

Geotechnical Engineer:

Ninyo & Moore

13 Orchard Rd., Suite 105, Lake Forest, CA 92630 ph. 310.796.9000 fax 310.796.9001